



E:GO

MOBILIARIO



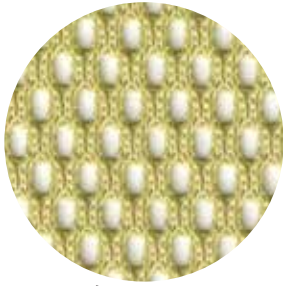
10

9

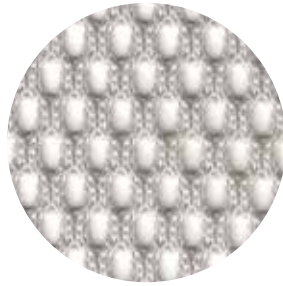
**CATÁLOGO
TELAS**

MALLA

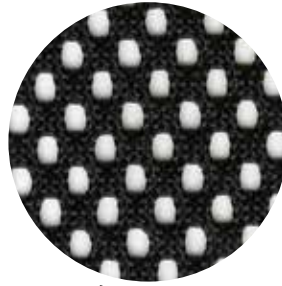
GRADO 2



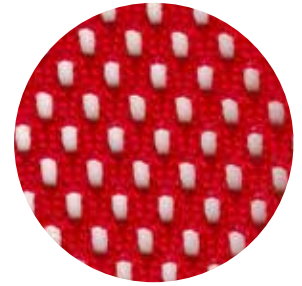
Limón



Plata



Negro



Rojo

Daytona

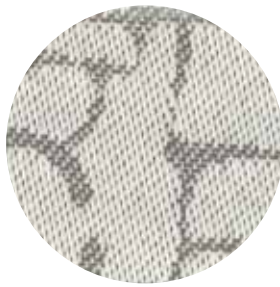
GRADO 2



Plumbago

Collage

GRADO 2



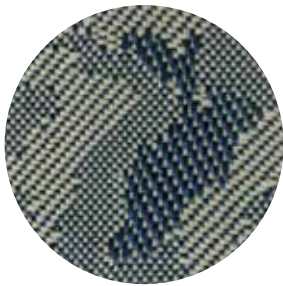
Acero

Indianapolis

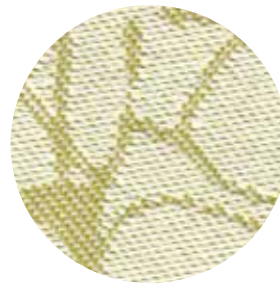
GRADO 2



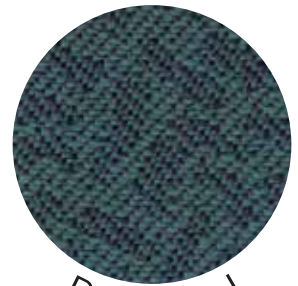
Vino



Beige



Pera



Pavorreal

Tecknoleather

GRADO 2



Paja



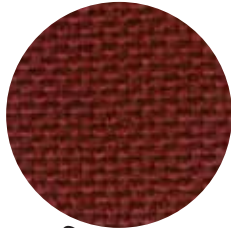
Chocolate



Negro

CANCÚN

GRADO 1



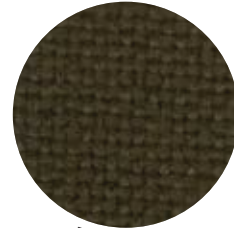
Shedron



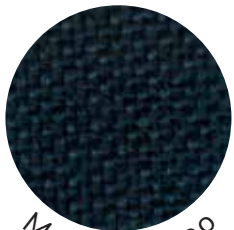
Vino Claro



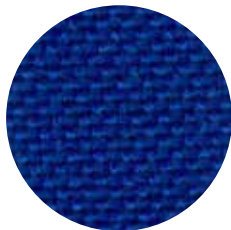
Rojo



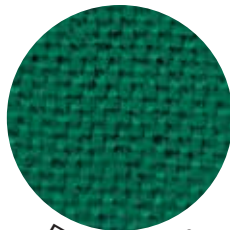
Tabaco



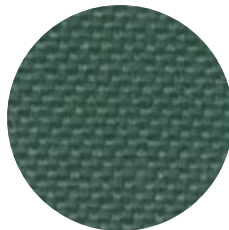
Mediterraneo



Eléctrico



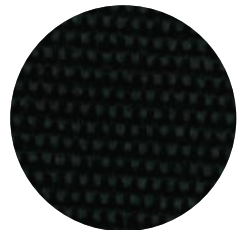
Esmeralda



Aqua



Limón



Negro

Office Crep

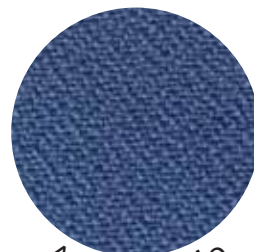
GRADO 2



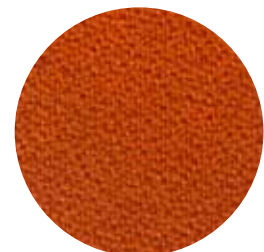
Aceituna



Verde Rea



Azul Medio



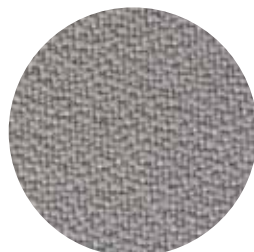
Arenilla



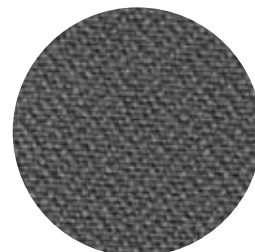
Rojo Rea



Vino Rea



Perla



Gris Rea



Azabache